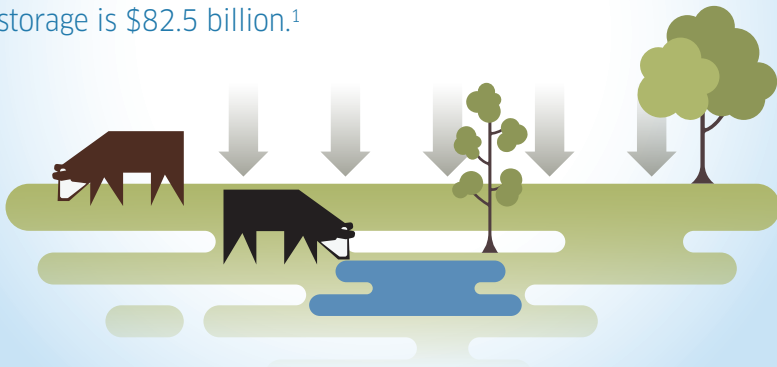


Beef cattle production



helps preserve approximately
1.5 BILLION
tonnes of carbon in Canada.

The estimated value of this storage is \$82.5 billion.¹



¹If regulatory frameworks in Canada were to put a price on carbon. Estimate based on conversion of carbon to CO₂ eq. at \$15/ tonne (low range from AB, BC).

Find the facts at
www.crsb.ca